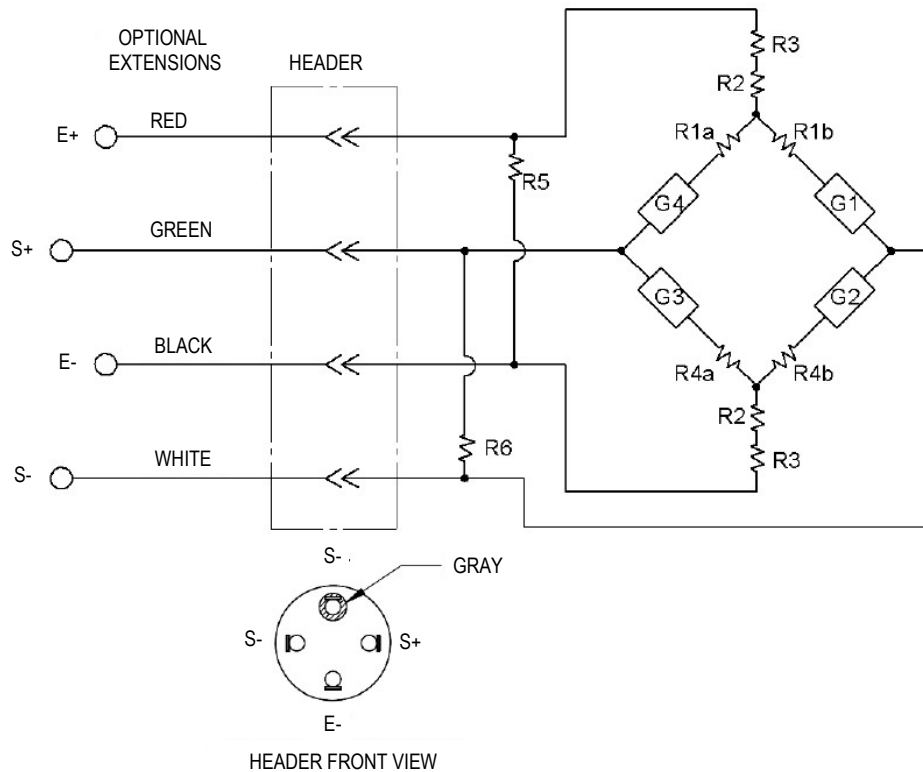


Full Bridge

Trim & Compensation Resistance

Header Identification Code



Legend:

Strain Gages: G1, G2, G3, and G4
 Excitation: E+ and E-
 Signal: S+ and S-

Bridge Trim & Compensation Resistors when required, as follows:

Initial Bridge Balance:	R1a or R1b
Signal Trim:	R2
Modulus Trim:	R3
Temperature Compensation:	R4a or R4b
Excitation Res. Trim:	R5
Signal Res. Trim:	R6

(Applicable notation and codes conform to Western Regional Strain Gage Committee's recommendations.)

Note: Increasing tension strain in gages G1 and G3, and compression in gages G2 and G4, induces increasing signal of positive polarity.