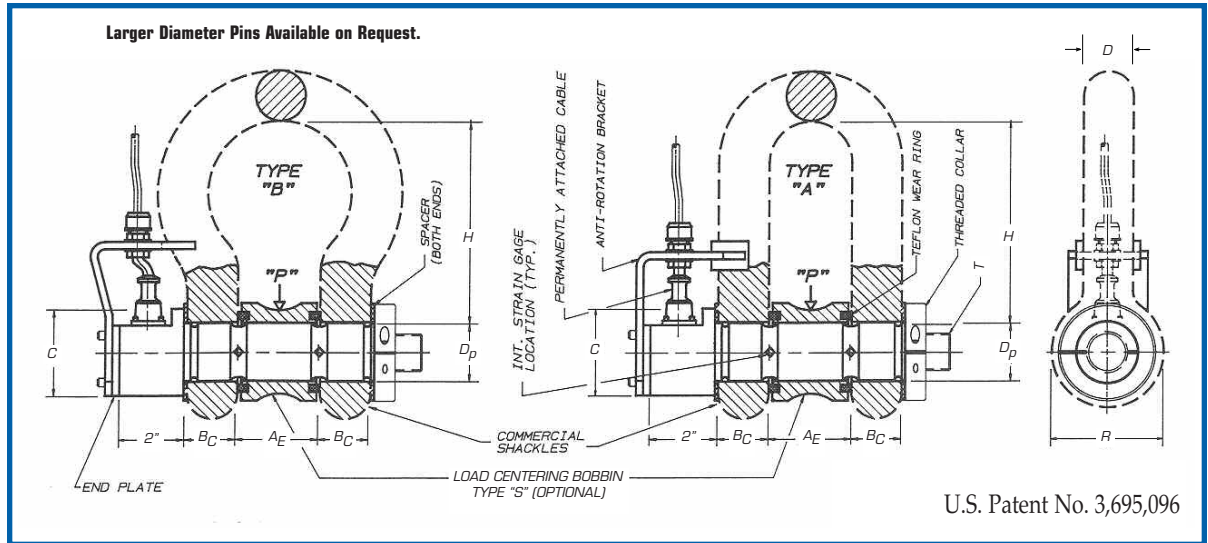




RCP/SCP Series, Standard Force Sensing Shackle Bolts

(For Crosby or Skookum Anchor & Chain Shackles)

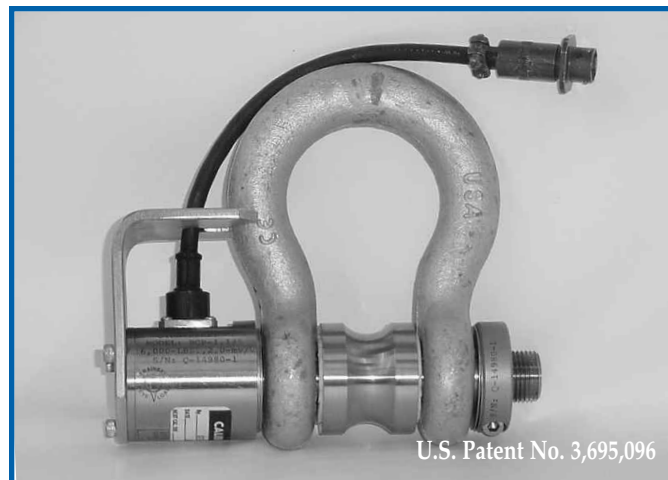


NOMENCLATURE

A_E	Shackle Opening	H	Inside Length of Shackle (Nominal)
B_C	Width of Shackle Ear = D (Nominal)	P	Load, Capacity
C	Clevis Bolt Head Diameter	R	Outside Diameter of Shackle Ear (Nominal)
D	Nominal Shackle Size	T	Thread Size
D_p	Nominal Shackle Bolt Diameter		

FEATURES OF STRAINERT LOAD SENSING CLEVIS BOLTS

- EASY INSTALLATION:** RCP and SCP models replace standard Crosby or Skookum shackle bolts/pins respectively.
- PRECISE LOAD SENSING:** Complete strain gage bridge circuit bonded and sealed inside small hole along longitudinal axis of Bolt, by exclusive Strainert process.
- RUGGED:** Due to self protecting nature of strain gage installation sealed inside small holes. Proven immune to harsh environment.
- ACCURACY:** Strainert Load Sensing Clevis Bolts have combined error due to repeatability and non-linearity of less than 1% of rated load typically.



RCP SERIES, STANDARD FORCE SENSING SHACKLE BOLTS FOR CROSBY SHACKLES

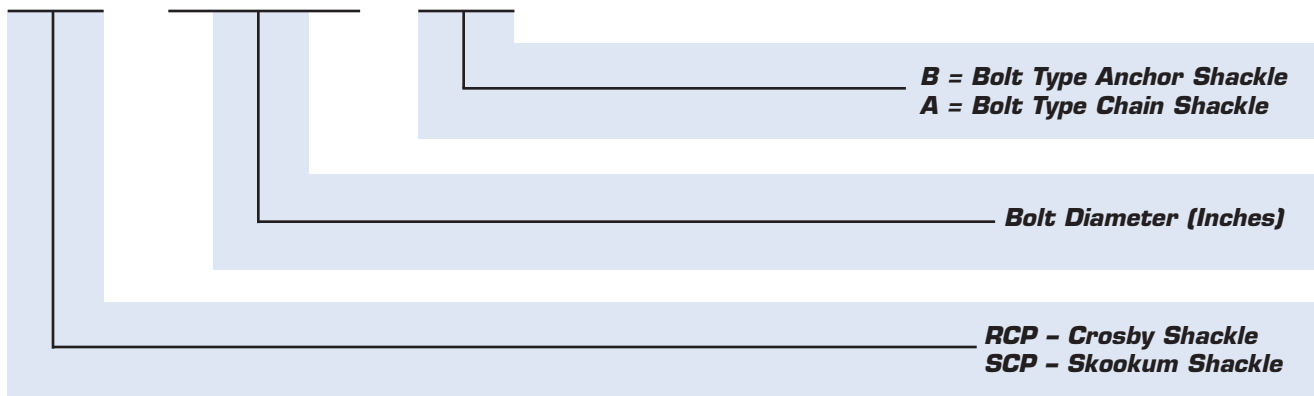
MODEL NO.	SHACKLE SIZE	P CAP. LBS.	Dp DIA.	B _c /D	A _E	A _E TOL. ±	C DIA.	H		R	T	BOBBINS
								A	B			
RCP-0.437	3/8"	2,000	0.437	0.38	0.66	0.06	2.000	1.22	1.44	0.91	5/16-24 UNF	SCP-0.437-S
RCP-0.625	1/2"	4,000	0.625	0.50	0.81	0.06	2.000	1.63	1.88	1.19	1/2-20 UNF	SCP-0.625-S
RCP-0.750	5/8"	7,000	0.750	0.63	1.06	0.06	2.000	2.00	2.38	1.50	1/2-20 UNF	SCP-0.750-S
RCP-0.875	3/4"	9,500	0.875	0.75	1.25	0.06	2.000	2.38	2.81	1.81	3/4-16 UNF	SCP-0.875-S
RCP-1.000	7/8"	12,000	1.000	0.88	1.44	0.06	2.000	2.81	3.31	2.09	3/4-16 UNF	SCP-1.000-S
RCP-1.125	1"	16,000	1.125	1.00	1.69	0.06	2.000	3.19	3.75	2.38	7/8-14 UNF	SCP-1.125-S
RCP-1.250	1-1/8"	22,000	1.250	1.25	1.81	0.06	2.000	3.58	4.25	2.69	1-14 UNF	SCP-1.250-S
RCP-1.375	1-1/4"	25,000	1.375	1.38	2.03	0.06	2.000	3.94	4.69	3.00	1-14 UNF	SCP-1.375-S
RCP-1.500	1-3/8"	30,000	1.500	1.50	2.25	0.13	2.000	4.38	5.25	3.31	1-1/4-12 UNF	SCP-1.500-S
RCP-1.625	1-1/2"	32,000	1.625	1.63	2.38	0.13	2.000	4.81	5.75	3.63	1-1/4-12 UNF	SCP-1.625-S
RCP-2.000	1-3/4"	50,000	2.000	1.75	2.88	0.13	2.500	5.75	7.00	4.19	1-1/2-12 UN	SCP-2.000-S
RCP-2.250	2"	65,000	2.250	2.25	3.25	0.13	2.750	6.75	7.75	4.81	1-3/4-16 UNF	SCP-2.250-S
RCP-2.750	2-1/2"	100,000	2.750	2.75	4.13	0.25	3.250	8.00	10.50	5.69	2-12 UN	SCP-2.750-S
RCP-3.250	3"	150,000	3.250	3.25	5.00	0.25	3.750	8.50	13.00	6.50	2-12 UNF	SCP-3.250-S
RCP-3.750	3-1/2"	180,000	3.750	3.75	5.25	0.25	4.375	NONE	14.63	8.00	3-12 UN	SCP-3.750-S
RCP-4.250	4"	220,000	4.250	4.25	5.50	0.25	4.875	NONE	14.50	9.00	3-1/2-12 UN	SCP-4.250-S

SCP SERIES, STANDARD FORCE SENSING SHACKLE BOLTS FOR SKOOKUM SHACKLES

MODEL NO.	SHACKLE SIZE	P CAP. LBS.	Dp DIA.	A _E	A _E TOL. ±	C DIA.	H		R	T	BOBBINS
							A	B			
SCP-0.625	1/2"	4,000	0.625	0.81	0.06	2.000	NONE	2.22	1.43	1/2-20 UNF	SCP-0.625-S
SCP-0.875	3/4"	9,500	0.875	1.25	0.06	2.000	NONE	2.87	1.84	3/4-16 UNF	SCP-0.875-S
SCP-1.000	7/8"	12,000	1.000	1.43	0.06	2.000	NONE	3.12	2.12	3/4-16 UNF	SCP-1.000-S
SCP-1.125	1"	16,000	1.125	1.43	0.06	2.000	3.25	3.75	2.25	7/8-14 UNF	SCP-1.125-S
SCP-1.250	1-1/8"	22,000	1.250	1.81	0.13	2.000	3.56	4.25	2.62	1-14 UNF	SCP-1.250-S
SCP-1.375	1-1/4"	25,000	1.375	2.03	0.13	2.000	4.25	4.68	2.87	1-14 UNF	SCP-1.375-S
SCP-1.625	1-1/2"	32,000	1.625	2.38	0.13	2.000	5.00	6.00	3.43	1-1/4-12 UNF	SCP-1.625-S
SCP-2.000	1-3/4"	50,000	2.000	2.88	0.13	2.500	5.75	7.00	4.50	1-1/2-12 UN	SCP-2.000-S
SCP-2.250	2"	65,000	2.250	3.25	0.13	2.750	6.50	7.12	5.12	1-3/4-16 UNF	SCP-2.250-S
SCP-2.750	2-1/2"	100,000	2.750	4.13	0.13	3.250	8.12	11.00	6.12	2-12 UN	SCP-2.750-S
SCP-3.250	3"	150,000	3.250	5.13	0.13	3.750	7.06	13.00	6.50	1-1/2-12 UNF	SCP-3.250-S
SCP-3.750	3-1/2"	180,000	3.750	5.75	0.25	4.375	NONE	15.00	8.00	3-12 UN	SCP-3.750-S
SCP-4.250	4"	220,000	4.250	6.50	0.25	4.875	NONE	17.00	9.00	3-1/2-12 UN	SCP-4.250-S

ORDERING INFORMATION

RCP-1.250 - B



Bobbin (Ordered Separately) SCP-1.250-S (See Accessories)

Standard Models include Modulus & Temperature Compensation, and Detailed Calibration Data (LO) (See Calibration Section).