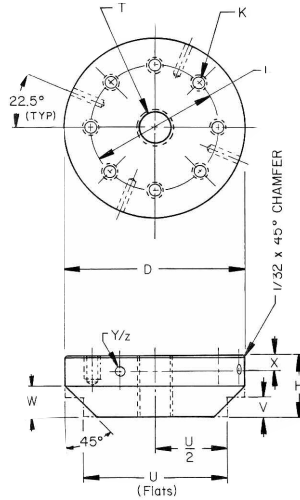




# STANDARD FLAT LOAD CELL® ACCESSORIES

## Universal Flat Load Cell® Base Dimensions

All Dimensions in inches and subject to change without notice.

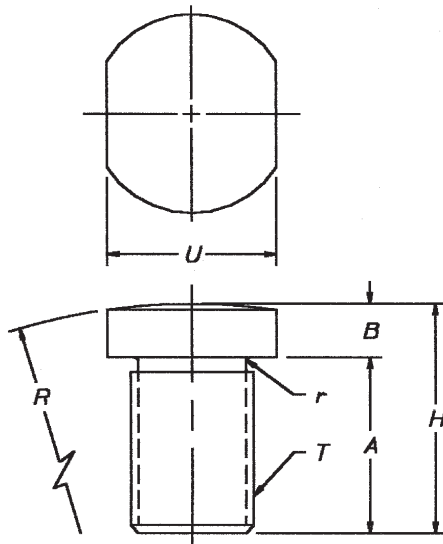


Material: Alloy Steel  
with Nickel Plating

MODEL	D DIA.	U	H	V	W	X	Y DIA.	Z DEPTH	T	K	L
BFL2.5UT	2-5/8	2	1-1/4	1/4	NONE	NONE	NONE	NONE	3/8-16UNC-2B or 13/32" Dia. THRU HOLE	#10-32UNF-2B 9/16" DEEP 8 - PLACES	1-15/16
BFL5UT BFL7.5UT	2-5/8	2	1-1/4	1/4	NONE	NONE	NONE	NONE	7/16-20UNF-2B or 15/32" Dia. THRU HOLE	#10-32UNF-2B 9/16" DEEP 8 - PLACES	1-15/16
BFL4.5UT	3-3/8	3	1-1/4	3/8	NONE	NONE	NONE	NONE	7/16-20UNF-2B or 15/32" Dia. THRU HOLE	1/4-28UNF-2B 9/16" DEEP 8 - PLACES	2-7/16
BFL10UT	3-3/8	3	1-1/4	3/8	NONE	NONE	NONE	NONE	5/8-18UNF-2B or 21/32" Dia. THRU HOLE	1/4-28UNF-2B 9/16" DEEP 8 - PLACES	2-7/16
BFL25UT	5-1/8	4-1/2	1-3/4	1/2	NONE	NONE	NONE	NONE	1-14UNF-2B or 1-1/32" Dia. THRU HOLE	3/8-24UNF-2B 7/8" DEEP 8 - PLACES	3-3/4
BFL35UT	6-1/8	5-1/2	1-3/4	1/2	NONE	NONE	NONE	NONE	1-1/4-12UNF-2B or 1-1/4" Dia. THRU HOLE	7/16-20UNF-2B 7/8" DEEP 8 - PLACES	4-1/2
BFL50U(C2T)	7-1/4	NONE	2	NONE	1	1/2	3/8	1-1/2 Deep	1-1/2-12N-2B or 1-17/32" Dia. THRU HOLE	1/2-20UNF-2B 7/8" DEEP 8 - PLACES	5-1/4
BFL75UT	8-1/2	NONE	2-1/2	NONE	1-1/4	5/8	3/8	1-1/2 Deep	1-3/4-12N-2B or 1-25/32" Dia. THRU HOLE	3/4-16UNF-2B 7/8" DEEP 8 - PLACES	6-1/2
BFL100UT	9-1/2	NONE	3	NONE	1-1/2	3/4	1/2	2 Deep	2-12UN-2B or 2" Dia. THRU HOLE	3/4-16UNF-2B 7/8" DEEP 8 - PLACES	7-1/4

## Universal Flat Load Cell® Load Buttons

All Dimensions in inches and subject to change without notice.



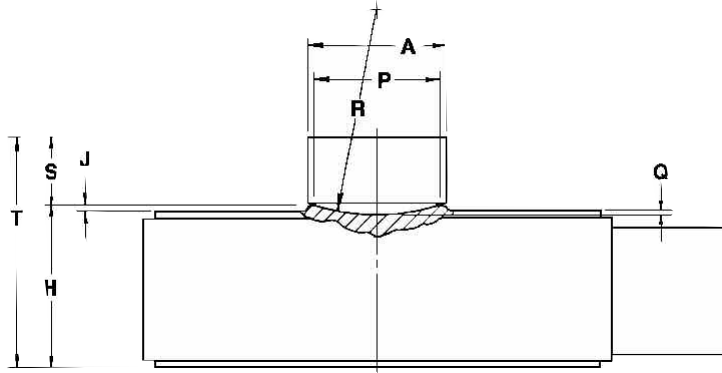
MODEL	A	B	H	R	r	U	T
FL05UB	3/4	1/4	1	0.750	0.005	7/16	1/4-20UNC-2A
FL1UB	1/4	1/4	1/2	0.750	0.005	7/16	5/16-18UNF-2A
FL2.5UB	3/4	1/4	1	0.750	0.005	7/16	3/8-16UNF-2A
FL5UB FL7.5UB	15/16	9/16	1-1/2	4.000	0.025	9/16	7/16-20UNF-2A
FL10UB	15/16	3/4	1-11/16	4.000	0.030	13/16	5/8-18UNF-2A
FL25UB	1-7/16	7/16	1-7/8	5.000	0.030	1-3/8	1-14UNF-2A
FL35UB	1-9/16	7/16	2	6.000	0.060	1-5/8	1-1/4-12NF-2A
FL50UB	1-5/16 1-11/16	11/16	2 2-3/8	10.000	0.060	1-3/4	1-3/8-12NF-2A 1-1/2-12NF-2A
FL75UB	2-5/16	7/8	3-3/16	12.000	0.060	2-1/4	1-3/4-12NF-2A
FL100UB	2-11/16	2-1/2	5-3/16	12.000	0.050	2-5/8	2-12UN-2A

# STANDARD FLAT LOAD CELL® ACCESSORIES

## Spherical Load Buttons for Compression Flat Load Cells®

Accommodates Angular Misalignment

MODEL	CAPACITY LBS.	A DIA.	H	J	P DIA.	Q	R RAD.	S	T
FL025C(CS)	250	9/16	1-1/16	1/16	1/2	1/32	7/8	1/4	1-5/16
FL05C(CS)	500	9/16	1-1/16	1/16	1/2	1/32	7/8	1/4	1-5/16
FL1C(CS)	1,000	9/16	1-1/16	1/16	7/16	1/32	7/8	1/4	1-5/16
FL2.5C(CS)	2,500	9/16	1-1/16	1/16	1/2	1/32	1	1/4	1-5/16
FL5C(CS)	5,000	11/16	1-1/16	1/16	5/8	3/64	1	1/2	1-9/16
FL7.5C(CS)	7,500	11/16	1-1/16	1/16	19/32	3/64	1	1/2	1-9/16
FL10C(CS)	10,000	31/32	1-3/16	1/16	7/8	1/16	1-1/2	3/4	1-15/16
FL25C(CS)	25,000	1-1/8	1-1/2	1/16	1	5/64	1-3/4	3/4	2-1/4
FL50C(CS)	50,000	1-1/2	1-3/4	1/16	1-3/8	7/64	2-1/2	3/4	2-1/2
FL100C(CS)	100,000	2-1/16	2-1/2	1/8	1-15/16	5/32	3	1	3-1/2
FL150C(CS)	150,000	2-3/16	2-7/8	1/8	2-1/16	11/64	3	1	3-7/8
FL200C(CS)	200,000	2-5/8	3-1/2	3/16	2-1/2	13/64	4	1	4-1/2
FL300C(CS)	300,000	3-1/4	4-1/4	3/16	3-1/8	1/4	5	1-1/4	5-1/2
FL500C(CS)	500,000	4-1/8	4-1/2	1/4	4	11/32	6-1/2	1-1/4	5-3/4
FL1,000C(CS)	1,000,000	5-1/2	6	5/16	5	17/64	10	2	8
FL1,500C(CS)	1,500,000	7	6-1/2	3/8	6-1/2	3/8	12-1/2	2	8-1/2
FL2,500C(CS)	2,500,000	9	8-1/4	3/8	8-1/2	1/2	16	2	10-1/4



## Strainert Compression Flat Load Cells®

Allowable Thru Center Hole Sizes

MODEL	Center Hole Dia. Inches	Center Hole Bolt Dia. Inches
FL025C(CH)	#9(0.196)	#10 (0.1935)
FL05C(CH)	#9(0.196)	#10 (0.1935)
FL1C(CH)	#9(0.196)	#10 (0.1935)
FL2.5C(CH)	#9(0.196)	#10 (0.1935)
FL5C(CH)	#9(0.196)	#10 (0.1935)
FL7.5C(CH)	#9(0.196)	#10 (0.1935)
FL10C(CH)	P(0.323)	5/16
FL25C(CH)	W(0.386)	3/8
FL50C(CH)	33/64	1/2
FL100C(CH)	41/64	5/8
FL150C(CH)	41/64	5/8
FL200C(CH)	49/64	3/4
FL300C(CH)	57/64	7/8
FL500C(CH)	1-1/64	1

Center Hole Bolts are provided for locating and attaching the load cell to loading structure. These bolts are not intended to carry any substantial loading.